

HOW TO CONCEAL BLINDS WINDOWS AND DOORS

Solutions to conceal blinds

Blindspace is the leading provider of solutions to conceal blinds. Our standard, modular and custom products are designed to conceal any type of blind, in any type of window or skylight.

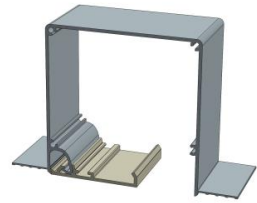
We work closely with architects, designers and blind specialists, continuously developing products and services to help them staying ahead.

Our mission is to provide more people with beautiful, bright and energy-efficient places in which to live, work, and play.

Blindspace® is a registered trademark of Blindspace AB. Key features, including the Blindspace® hinge cover, have patents pending in the UK and elsewhere.



The Blindspace® Concealment System



Series

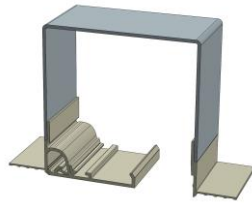
BLINDSPACE S STANDARD

Description

Extruded boxes and covers in standard sizes with holes for end caps and alignment of multiple boxes.

Benefits

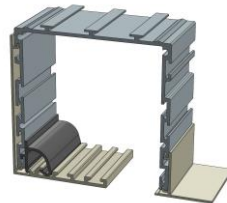
- Standard sizes
- Cost efficient
- Quick delivery



BLINDSPACE C CUSTOM

Custom made boxes that are made do any size to house blinds, guide wires and side channels.

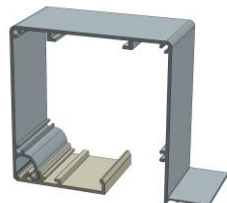
- Any box shape and size
- Side boxes for blackout, flyscreen or tensioned blinds
- Suitable for skylight blinds, gable blinds, double blinds,



BLINDSPACE M MODULAR SYSTEM

Versatile modular system with multiple configurations and accessories including LED in-box lighting.

- Flexibility in configurations
- Side boxes for blackout, flyscreen or tensioned blinds
- Add-ons such as LED



BLINDSPACE E BESPOKE EXTRUSION

Bespoke extrusions of boxes and covers in any size and design for larger projects.

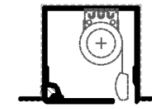
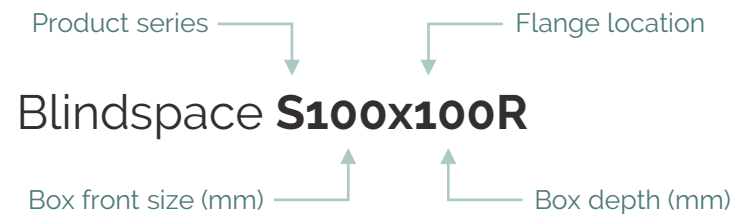
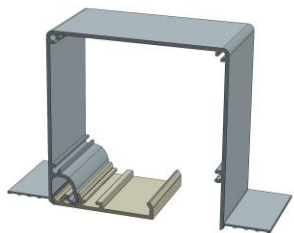
- Flexibility in design
- Allows for add-ons
- Cost efficient

Naming of products and flange configurations

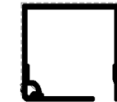
The regular flange configuration for Blindspace® boxes is to have skim coat flanges on both sides, for quick installation and seamless appearance after painting.

Blindspace® boxes are also provided with flanges on only one side or sometimes with no flanges. It is important when installing boxes without flanges that both sides of the box are still anchored firmly.

Blindspace product names consist of reference to product series, size of the box, and the flange configuration.



R - Regular



N - No Flange



I - Idle Corner Flange



H - Hinge Corner Flange

Designing for Blindspace

Blindspace® solutions to conceal blinds can be designed for and installed in windows, doors, gables and skylights.

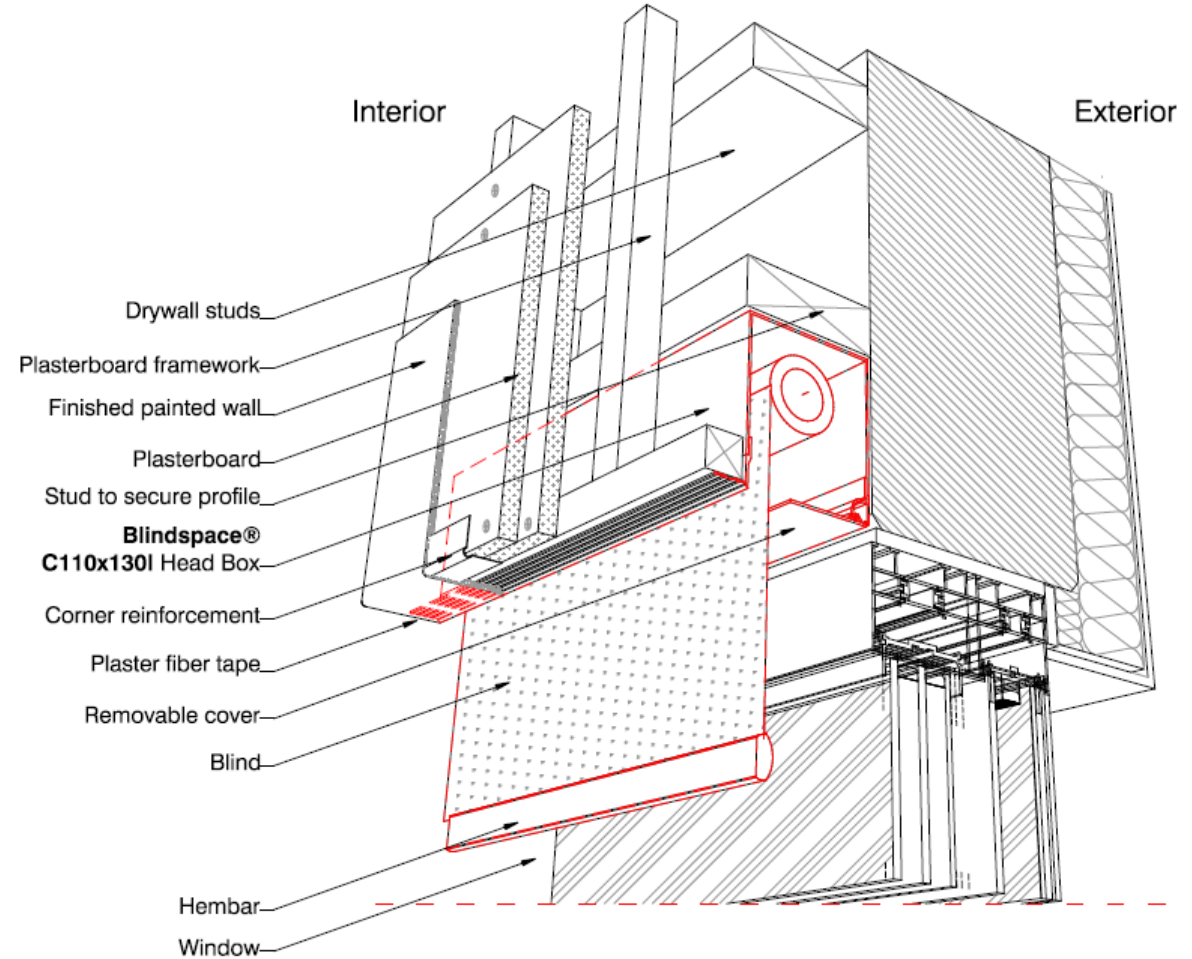
Installations can be made in the ceiling or wall, with the blind towards the window or towards the room. When planning it is important to allow for clearance for protruding door and window handles or cranks.

To future-proof for more blinds options and to make installation of blinds easier, it is recommended to install larger boxes when possible. See size charts for minimum box sizes.

Blindspace boxes are provided with end caps to form a box with four sides for seamless appearance after painting. Boxes and covers are aligned with splice pins and plates.

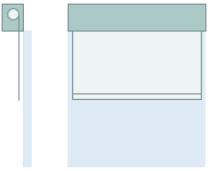
It is recommended to build pockets from studs where Blindspace boxes can be fitted. Pockets should have 3mm tolerance on each side for ease of Blindspace installation.

It is important to fix the box on both sides to produce a seamless appearance after painting.



Sample Drawings

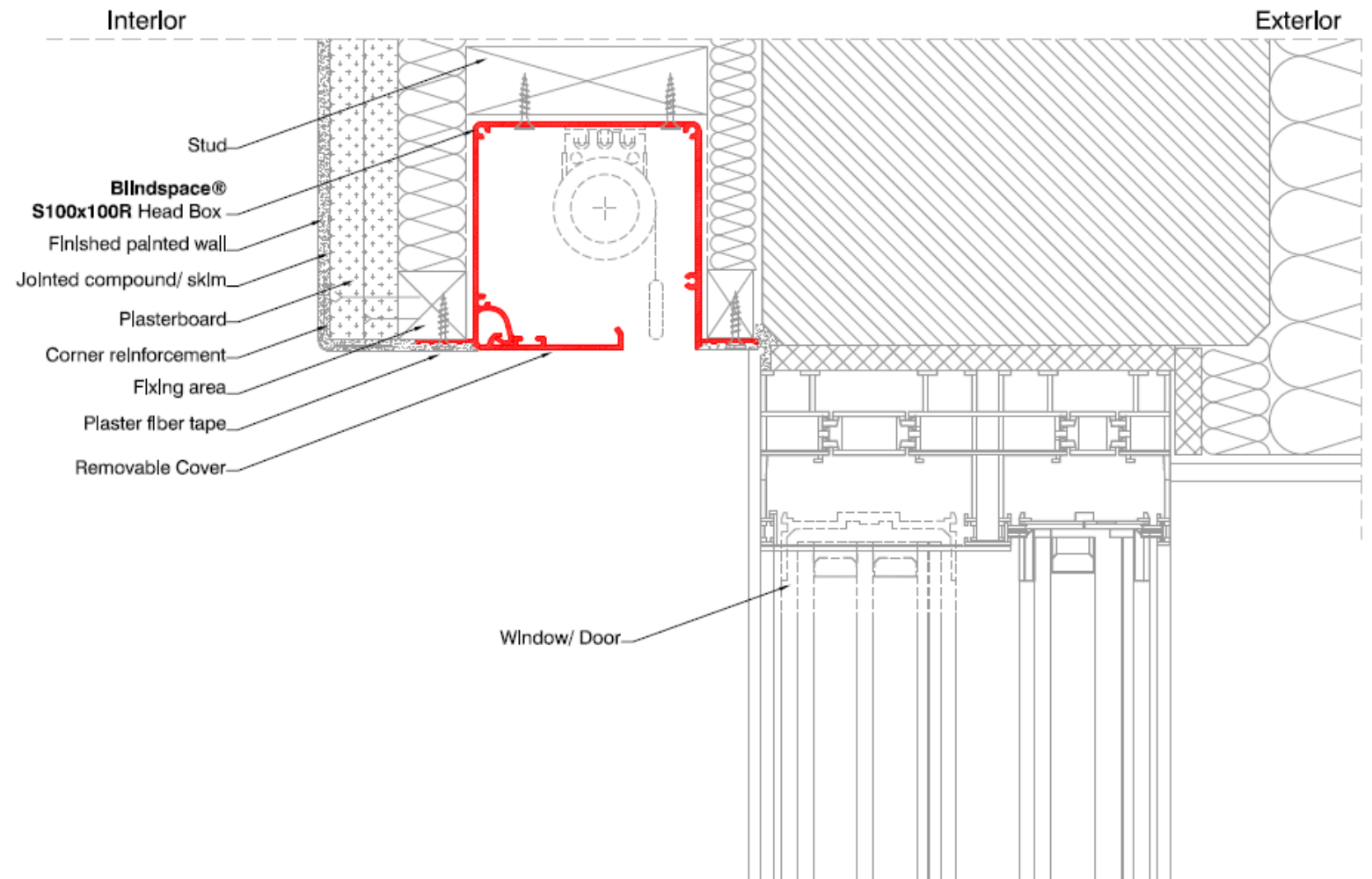
Example: Blindspace S100x100R



Standard Blindspace box installed inside wall with the blind gap towards the window with skim coat flanges on both sides.

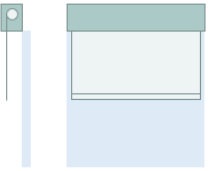
When installing Blindspace boxes with the gap towards the window, the main concern is to allow for clearance for protruding door and window handles or cranks.

Plaster should be feathered over flanges to produce seamless appearance after painting. There should be a slim hairline between the Blindspace cover and the window recess when completed.



Product	Blindspace S100x100R
Installation	Wall installation with screws through skim coat flanges and box.
Blind Gap	Towards the window. (Standard roll)

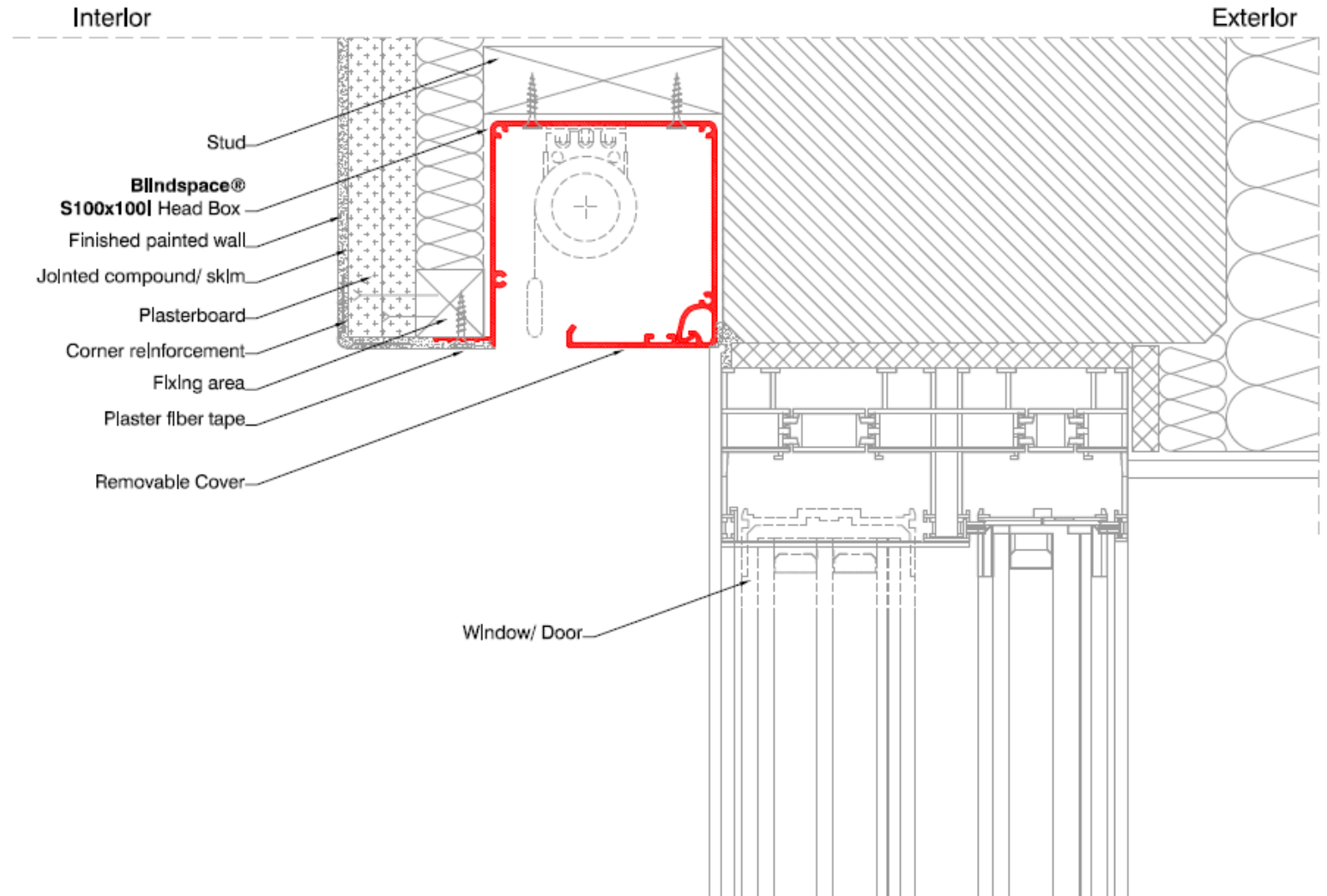
Example: Blindspace S100x100l



Standard Blindspace box installed inside wall with the blind gap towards the room with skim coat flanges on the room side.

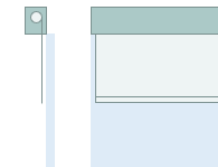
When installing Blindspace boxes with the gap towards the room there should be clearance for protruding door and window handles or cranks.

Plaster should be feathered over flanges to produce seamless appearance after painting. With the cover hard up against the wall there should be no visible hairline along the Blindspace cover.



Product	Blindspace S100x100l
Installation	Wall installation with screws through skim coat flanges and box.
Blind Gap	Towards the room. (Reverse roll)

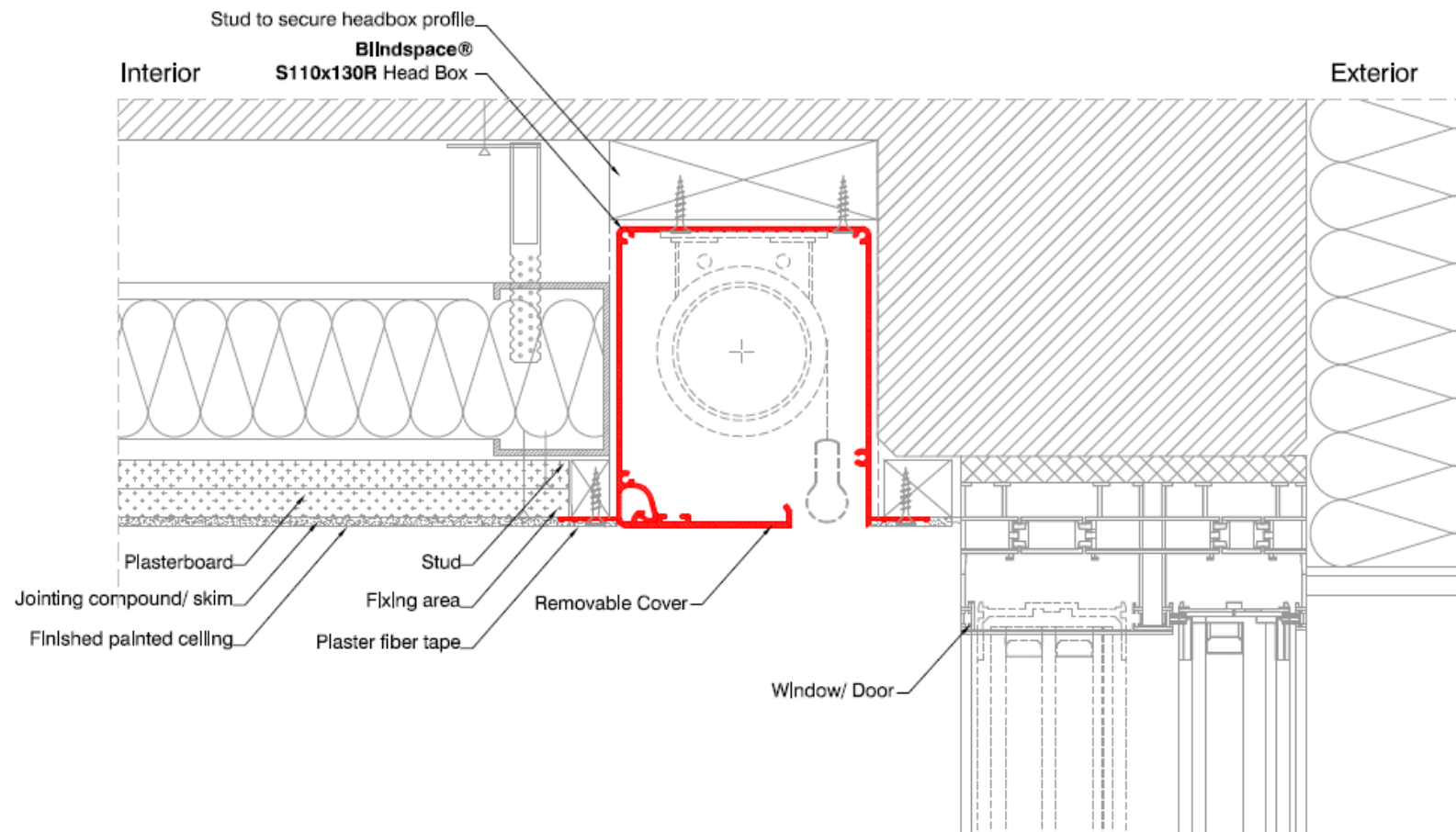
Example: Blindspace S110x130R



Standard Blindspace box installed inside a drop ceiling with the blind gap towards the window with skim coat flanges on both sides.

When installing Blindspace boxes with the gap towards the window, the main concern is to allow for clearance for protruding door and window handles or cranks.

Plaster should be feathered over flanges to produce seamless appearance after painting. There should be a slim hairline between the Blindspace cover and the window recess when completed.



Product	Blindspace S110x130R
Installation	Ceiling installation with screws through skim coat flanges and box.
Blind Gap	Towards the window. (Standard roll)

Example: Blindspace S100x100N & Reese RT1F

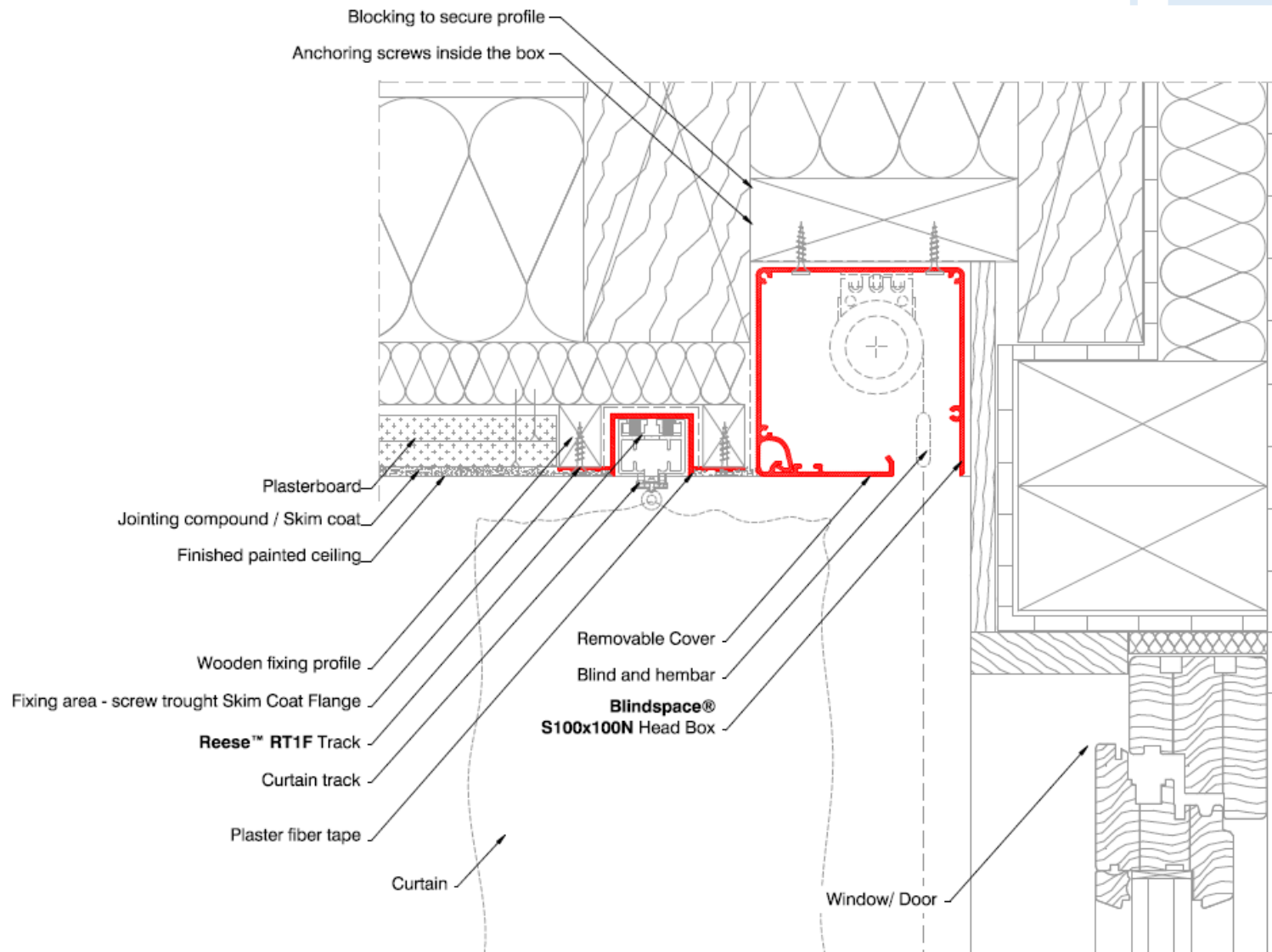
Standard Blindspace box installed inside the ceiling with the blind gap towards the window with no skim coat flanges.

Reese track for recess of curtain tracks installed with skim coat flanges on both sides.

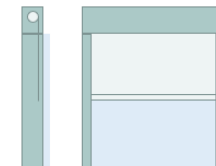
When installing Blindspace boxes with the gap towards the window, the main concern is to allow for clearance for protruding door and window handles or cranks.

Plaster should be feathered over flanges to produce seamless appearance after painting.

Product	Blindspace S100x100N Reese RT1F
Installation	Ceiling installation with screws through the box. Screws through Reese skim coat flanges.
Blind Gap	Towards the window. (Standard roll)



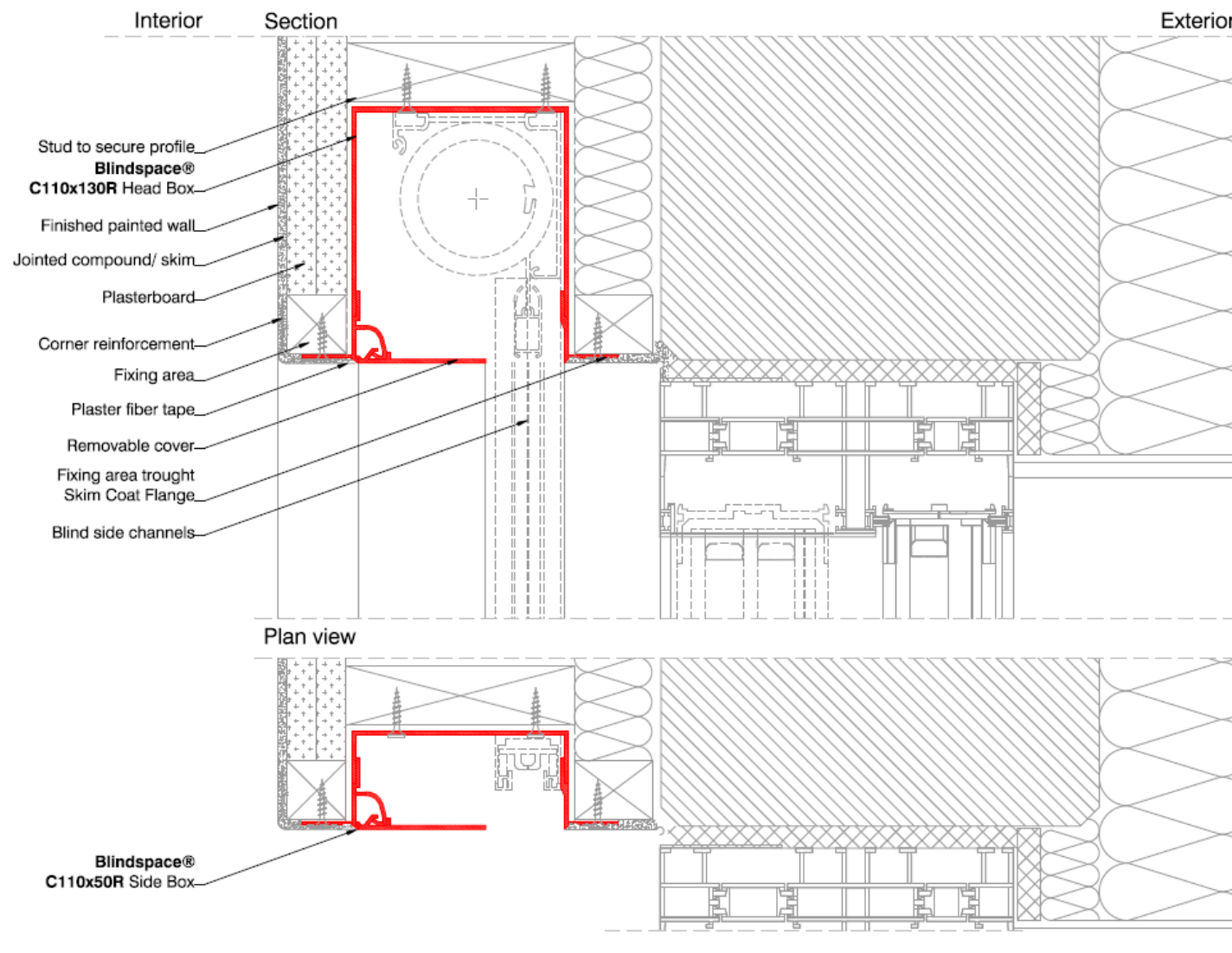
Example: Blindspace C110x130R & C110x50R



Custom Blindspace box for blinds with side channels such as blackout blinds and insect screens. Blindspace boxes installed inside wall with the blind gap towards the window with skim coat flanges on both sides.

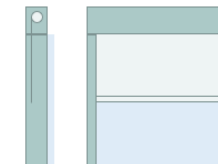
When installing Blindspace boxes with the gap towards the window, the main concern is to allow for clearance for protruding door and window handles or cranks.

Plaster should be feathered over flanges to produce seamless appearance after painting. There should be a slim hairline between the Blindspace cover and the window recess when completed.



Product	Blindspace C110x130R Blindspace C110x50R
Installation	Wall installation with screws through skim coat flanges and box.
Blind Gap	Towards the window. (Standard roll)

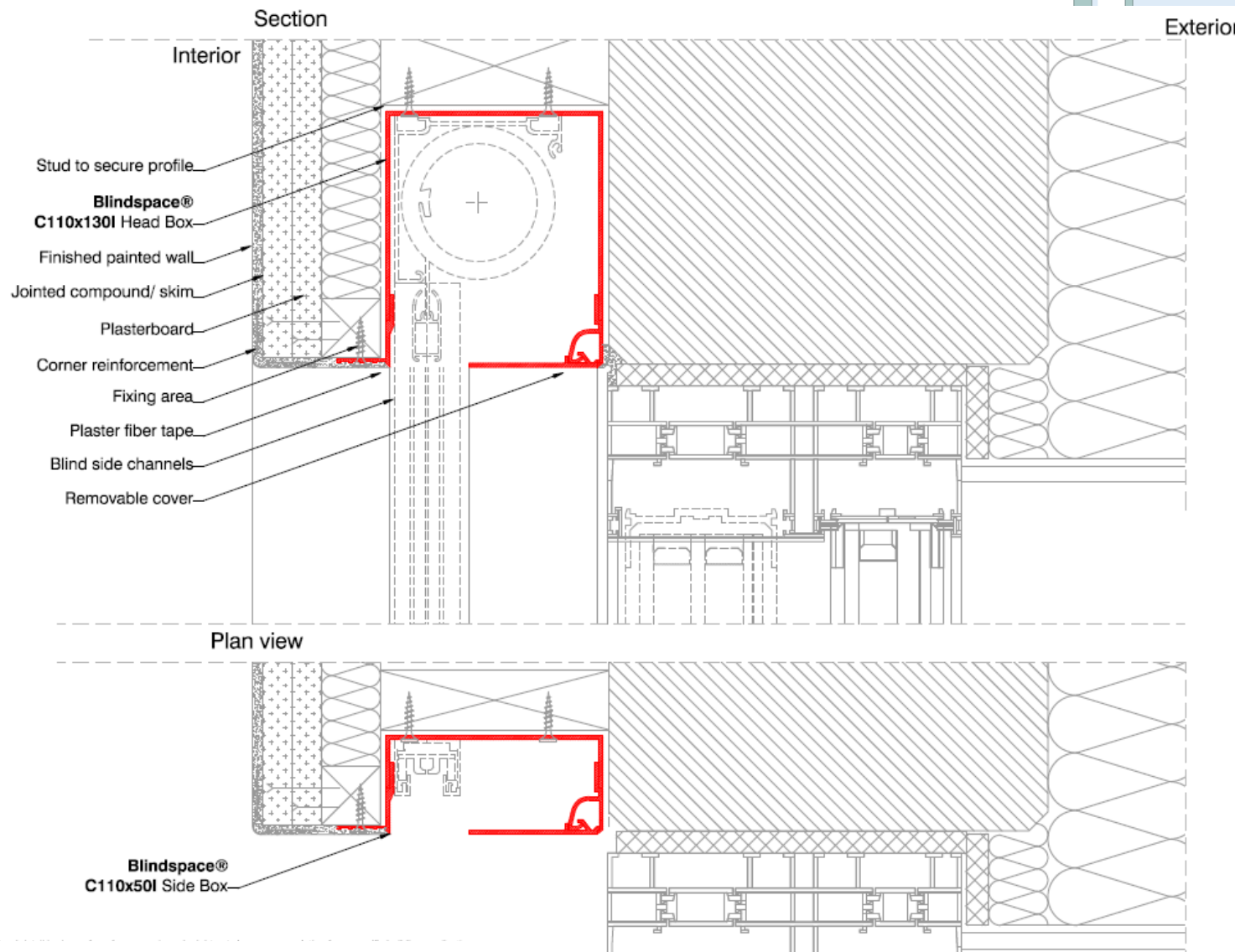
Example: Blindspace C110x130l & C110x50l



Custom Blindspace box for blinds with side channels such as blackout blinds and insect screens. Blindspace boxes installed inside wall with the blind gap towards the room with skim coat flange towards the room.

When installing Blindspace boxes with the gap towards the room there should be clearance for protruding door and window handles or cranks.

Plaster should be feathered over flanges to produce seamless appearance after painting.



Product	Blindspace C110x130l Blindspace C110x50l
Installation	Wall installation with screws through skim coat flanges and box.
Blind Gap	Towards the room. (Reverse roll)

Multiple Configuration Opportunities

Blindspace® for windows and doors

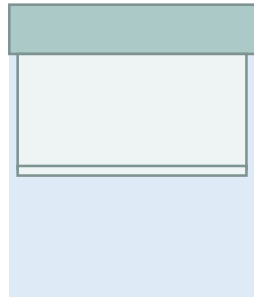
Most Popular

HEADBOX ONLY

Side view



Front view

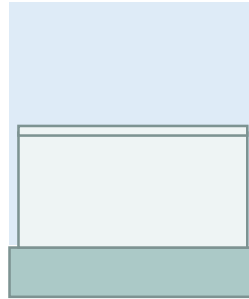


BOTTOM BOX ONLY

Side view



Front view



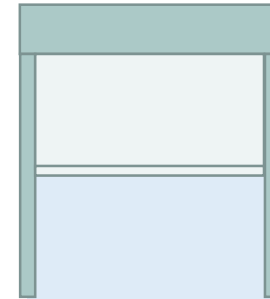
Black-Out or Insect Screen

HEADBOX + SIDE BOXES

Side view



Front view

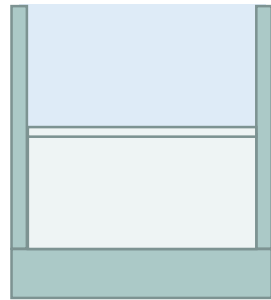


BOTTOM BOX + SIDE BOXES

Side view

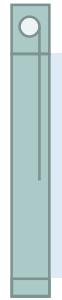


Front view

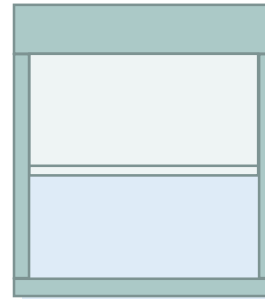


WINDOW FRAME

Side view

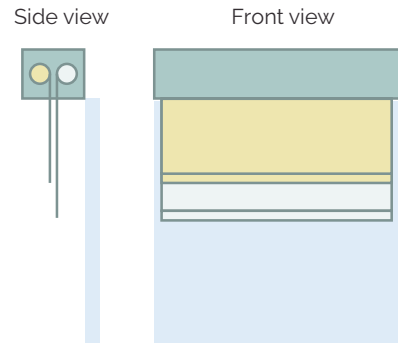


Front view

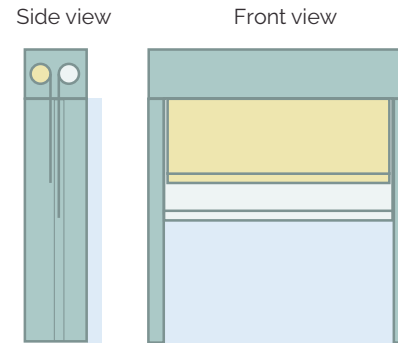


Blindspace® for double blinds

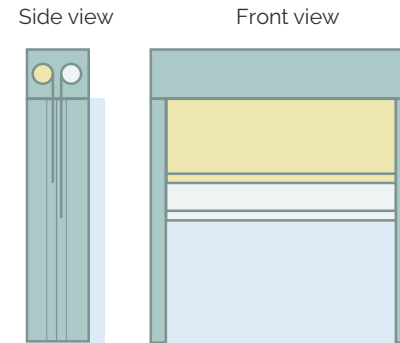
HEADBOX ONLY – BLINDS SIDE BY SIDE



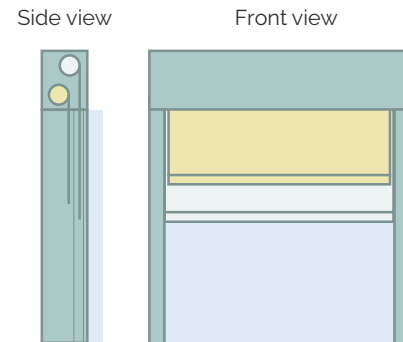
BOXES FOR ROLLER + ZIP SIDE BY SIDE



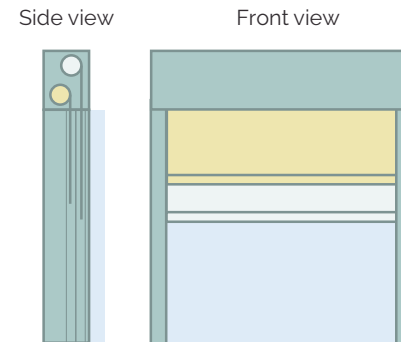
BOXES FOR DUAL ZIP SIDE BY SIDE



BOXES FOR ROLLER + ZIP STACKED



BOXES FOR DUAL ZIP STACKED



Standard Sizes & Bespoke Solutions

Blindspace® for windows and doors – Size of windows and boxes

Head box



W: 100
H: 100



W: 110
H: 130



W: 110
H: 170



W: 110
H: 200



W: 135
H: 155



W: 135
H: 200



W: 155
H: 220



W: 175
H: 235



W: 210
H: 270

Motorized Roller Blind	W: 2800 H: 2900	W: 4000 H: 3800	<	<		W: 4200 H: 5200		W: 5000 H: 6100	W: 6500 H: 9700
Motorized Roller ZIP Blind		W: 2900 H: 3000	<	<	W: 3900 H: 4200			W: 4900 H: 6100	W: 6400 H: 9700
Honeycomb Duette® Blind		W: 2200 H: 2200	W: 2200 H: 3800	W: 2200 H: 4200					
Honeycomb Duette® (Shaped)		W: 2200 H: 1500	W: 2200 H: 3200	W: 2200 H: 4200					
Fabric or Pinoleum Roman Blind				W: 2000 H: 2200			W: 2000 H: 2700		

Examples used: Standard Motorized Roller Blind: Benthin Medium Std Roller Blind RM01, Benthin Large Std Roller Blind RL01, SHY 110/80 240v with 75mm hem bar, SHY 150/110 240v with 75mm hem bar, SHY 200/160 240v with 75mm hem bar. Motorized Roller ZIP Blind: SHY 85/60 ZIP 240v with 36mm hem bar, SHY 110/80 ZIP 240v with 36mm hem bar, SHY 150/110 ZIP 240v with 75mm hem bar, SHY 200/160 ZIP 240v with 75mm hem bar. Honeycomb Duette® Blind: Duette® 25mm free hanging motorized, Fabric or Pinoleum Roman Blind after measure.

ABOUT BLINDSPACE

Blindspace is an innovation-driven company founded in Sweden at the historic cotton mill Nääs Fabriker in 2016.

Our mission is to provide more people with beautiful, bright and energy-efficient places in which to live, work, and play.

Being the preferred choice among architects, contractors and shading specialists, to conceal blinds in any window.

Please visit www.blindspace.com for inspiring images and videos and www.blindspace.com/resources-to-conceal-blinds for CAD drawings, size charts, configurations, installation instructions and to request samples,

Contact us for more information!



www.blindspace.com
info@blindspace.com

Join us! →



BL'NDSPACE®